

Address : 248 KINGSBURY
ROAD, ERDINGTON
B24 8QY

1) STRUCTURAL FIRE PRECAUTIONS

All structure outlined in RED to be half hour fire resisting, in accordance with BS.476 : Part 22. In particular all doorways outlined in RED to be half hour fire resistant. All fire doors to be hung on three steel hinges, fitted with self closing device and combined intumescent / cold smoke seals.

2) OTHER FIRE PRECAUTIONS

- (i) Install an automatic fire detection and early warning system in accordance with the current BS.5839 Part 1, or equivalent, with L2 level of coverage.
- (ii) Install an automatic fire detection and early warning system in accordance with BS.5839 Part 6 Grade A LD2, or equivalent, (mains powered smoke/heat detectors with trickle charge battery back up and control panel).
- (iii) Install an automatic fire detection and early warning system in accordance with BS.5839 Part 6 to GRADE D standard, or equivalent, which comprises of mains powered smoke / heat detectors with trickle charged battery back-up.
- (iv) Install an Emergency Lighting System to the protected escape route in accordance with the current BS.5266 Part 1 or equivalent standard.

Housing Strategy & Standards Division
P.O. Box 6876, Birmingham. B6 5WH.

**PLEASE NOTE THIS PLAN IS FOR
GUIDANCE PURPOSES ONLY AND
SHOULD BE READ IN CONJUNCTION
WITH THE SCHEDULE OF WORKS :-**

SCHEDULE REF :

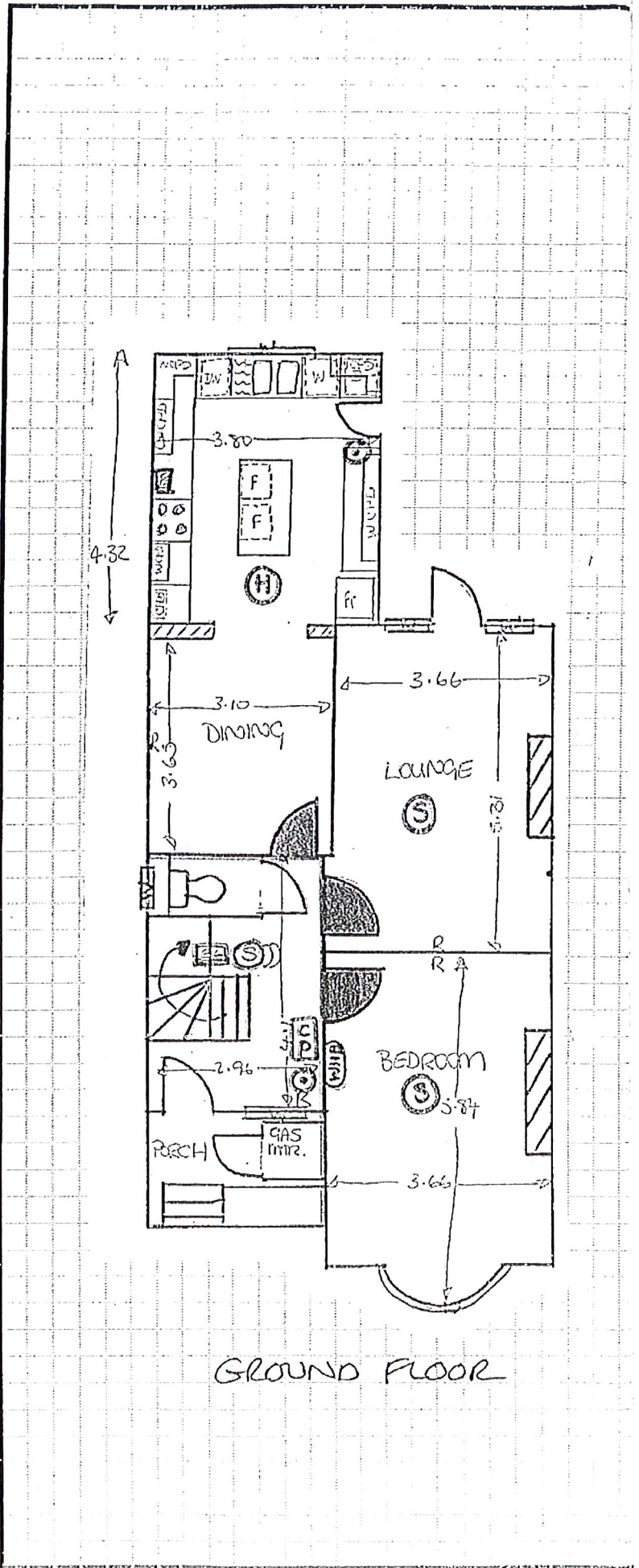
Prepared By : MICHELLE GREEN

Agreed By : [Signature] 6/8/07

West Midlands Fire Service [Signature] 7/8/07

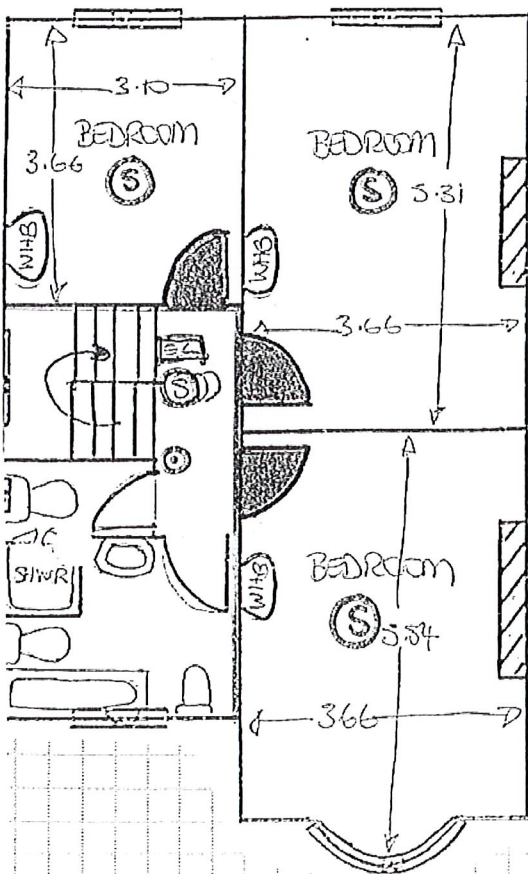
Date 3RD AUGUST 2007

- | | |
|---|--|
| Mains powered with battery back up, interlinked, Combined smoke detector and sounder. | Smoke detector linked to control panel. |
| Mains powered with battery back up, interlinked, Combined heat detector and sounder. | Heat detector linked to control panel. |
| Mains powered single point smoke detector and sounder with battery back | Manual call point (break glass) |
| 30 minute fire resisting door incorporating intumescent and cold smoke seals | Control Panel |
| Area to be covered by Emergency lighting | Fire Blanket |
| 30 minute fire resisting wall/partition | Escape window, PLEASE NOTE Escape Window must have a minimum opening of 0.33m ² |

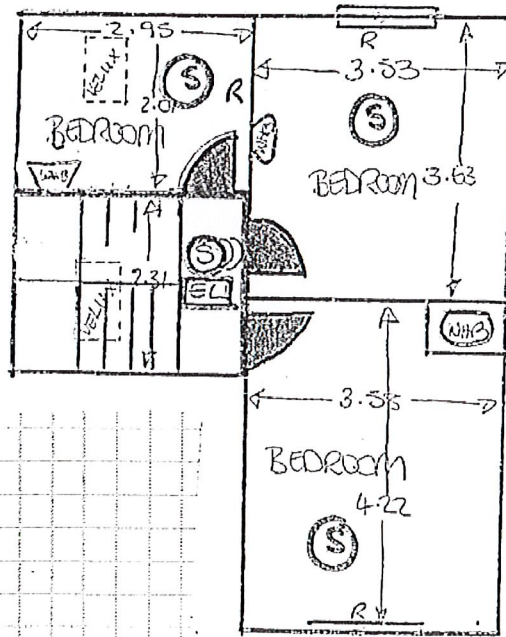


GROUND FLOOR

NOT TO SCALE



FIRST FLOOR



SECOND FLOOR